



THE LITHOFIN PROGRAMME

# Cleaning. Protecting. Maintaining.

Products for ceramic tiles, terracotta, natural stone,  
concrete stone and other surfaces



Research and development



Production



Bottling



Logistics

## FAMILY COMPANY

A brand that delivers on its promises.

### The founding years.

In 1953, in the town of Esslingen, Glaubrecht Stingel started to produce of a new type of cleaning product: ST57 KUKÜ. The demand for this product in Germany increased quickly and the foundation for the family company was laid. Soon, the company had to move to larger premises, to today's location in Wendlingen. There a growing team developed an extensive product range which continues to inspire customers to this day.

### Strong brand.

After completing his degree in chemistry, Heinz-Peter Stingel took over his parent's company in 1974. He focused the product ranges and concentrated all efforts towards ceramics, natural and artificial stone. In 1979 he grouped the products under one brand name. The brand name is a combination of the Greek word „lithos“ (=stone) and the English word „finish“ as in finishing treatment: LITHOFIN.

### Further development.

In 2003 Garvin Stingel joined the company and continued to push the internationalisation that had begun as far back as 1978. Built on the two pillars quality and service, the brand LITHOFIN operates in more than 25 countries worldwide. With a team of more than 60 employees in the areas research and development, production, sales, customer service and administration, LITHOFIN is one of the leading suppliers of stone care products.

■ The Professional Solution

## ACTING TODAY. THINKING OF TOMORROW.

Into the future with a high sense of responsibility.



As supplier of chemical products, we are keenly aware of our responsibility towards our employees, customers and the environment. For this reason, we introduced a strict quality and environmental management system in 1996. This system is audited in regular intervals and manages all processes leading to a high and constant standard of quality and safety.

### Partnership.

We maintain strong partnerships with trade and craft, our customers and partners. We consider mutual respect, fairness and trust as the foundation of any successful cooperation and partnership. As an employer, we support all members of our team and we are proud supporters of our region and our location. Research and development, production and logistics are all combined on one site in Wendlingen.

### Quality.

Quality of product and service is at the heart of what we do. Continuous laboratory as well as practical tests guarantee the product quality satisfies or surpasses the expectations of the user. Our team of experienced and motivated employees ensures that we meet our own high standards.

### Safety.

We use the most environmentally friendly raw materials possible and register our products with the German Federal Environmental Agency. The packaging is made from recyclable polyethylene (PE) and tinplate. Concentrated formulations allow an environmentally conscious dosage of the products. Health and safety are especially important to us. Therefore we invest into modern equipment and training the members of our team.

## TRIED AND TRUSTED PRODUCTS.

Stone care system: Cleaning. Protecting. Maintaining.

The product range for professional users and discerning end users is extensive. The products for cleaning, protecting and maintaining form a stone care system where three steps build onto each other. The product lines are carefully tuned to the individual properties of ceramic and porcelain tiles, cotto and terracotta, natural stone and artificial stone. The objective: well maintained surfaces for the long term.

### LITHOFIN stone care system.



#### CLEANING

Products for initial or occasional basic cleaning.

#### PROTECTING

Products for impregnating, colour enhancing and sealing.

#### MAINTAINING

Products for regular cleaning and care.

## TRIED AND TRUSTED SERVICE.

The service we promise.

We focus on issues surrounding cleaning, protecting and maintaining ceramics, natural and artificial stone. High quality products and our knowledge are your benefit. We offer detailed technical advice either on our service hotline or on site, training sessions and an extensive selection of information material.

### From us for you.

- Our trained technical and sales staff supports you in all matters, from using the products correctly to promotional activities.
- Our technical department and our laboratory constantly test new materials and surface finishes and create individual method statements.
- Detailed and material specific method statements support you in advising your customers.
- In training sessions and workshops we help to learn the efficient use of our products.
- LITHOFIN-Products are available in specialised tile and natural stone shops and building materials suppliers. They are recommended by leading tile manufacturers and natural stone suppliers.

Our technical staff will personally answer your questions on our service hotline. You will also find all types of information on: [www.lithofin.co.uk](http://www.lithofin.co.uk)

For a quick look:



For further information and service please call:

Technical advise: 0 19 62 73 21 26  
[www.lithofin.co.uk](http://www.lithofin.co.uk)

## SALES SUPPORT.

Increasing sales.

The effectiveness and versatility of the LITHOFIN-Products convince professionals as well as end consumers. The well-known brand name has a high recognition value and therefore creates demand.

### Product presentation.

Modern sales displays in three sizes are available for presenting the products. An attractive header board, a clear and easy solutions guide and a holder for customer information are included.

- **Sales display mini** (48x56x152 cm) for approx. 80 bottles
- **Sales display midi** (48x56x206 cm) for approx. 110 bottles
- **Sales display maxi** (48x65x206 cm) for approx. 200 bottles



maxi

Art.Nr. 04-130

midi

Art.Nr. 04-150

mini

Art.Nr. 04-140

Product information and method statements are also geared towards end consumers and provide a clear picture. All packaging features detailed instructions for use.

## PRODUCT LINES.

Clarity through colour.

There are numerous applications areas for the LITHOFIN product range. The applications include the treatment of ceramic and porcelain tiles, terracotta and cotto, natural and concrete stone, quartz composite as well as little helpers for around the home. The range is completed by problem solvers that are exclusively directed at the professional user. The different product lines are colour coded to make them easier to identify and differentiate. The colour codes can be found on the labels and on all the information material. The packaging features a uniform design. The product benefits are clearly presented in words and pictures.

<b>UNI</b>	products for ceramics and natural stone	Page 9
<b>KF</b>	products specifically for ceramic and porcelain tiles	Page 12
<b>TC</b>	products specifically for cotto and terracotta	Page 15
<b>MN</b>	products specifically for natural and artificial stone	Page 17
<b>P&amp;L</b>	products specifically for parquet and laminate	Page 21
<b>HOME</b>	products for around the house	Page 22
<b>PRO</b>	products for the professional user	Page 24

### Packaging units:

- 250 ml:** bottle with childproof cap (20 per box)
- 500 ml:** bottle with childproof cap (10 per box)
- 1 Liter:** bottle with childproof cap (10 per box)
- 5 Liter:** canister (2 per box)

## For ceramics, natural and artificial stone.



UNI-Line.

Products for ceramic and porcelain tiles, natural and concrete stone as well as other surfaces.



Art.Nr. 010

### Lithofin CEMENT-AWAY

The cement residue remover for heavy duty outdoor use.

Removes even stubborn cement and mortar residues, blooms and similar stubborn dirt from acid-resistant surfaces. The cleaner for both newly laid and older porcelain tiles, quarry tiles and terracotta.

**Product type:** acidic cleaner

- concentrate
- extra strong
- highly active

**Coverage:** approx. 30 to 50 m<sup>2</sup>/L

**Storage:** closed, cool, up to 5 years

**Packaging:** 1L, 5L



Art.Nr. 012

### Lithofin WEXA

**Multi Purpose Cleaner.**

Dissolves and completely removes grease and oil deposits, care product residues, wax films, soot, and similar dirt. The ideal multi-purpose cleaner for use in workshops, garages, houses, etc.

**Product type:** alkaline cleaner

- concentrate
- highly active
- universally usable

**Coverage:** approx. 7 to 15m<sup>2</sup>/L

**Storage:** closed, cool, dry, up to 2 years

**Packaging:** 1L, 5L



Art.Nr. 018

### Lithofin WAX-OFF

**Wax and Oil Remover.**

Removes layers of wax, sealants, tar, oil stains, lacquer and glue. Deposits are dissolved and can then be washed off with water.

**Product type:** solvent based cleaner

- ready-to-use
- deep acting
- leaves no residues

**Coverage:** approx. 7 to 15m<sup>2</sup>/L

**Storage:** closed, cool, dry, up to 4 years

**Verpackung:** 1L, 5L



Art.Nr. 187

### Lithofin OIL-EX

**Oil-Stain Remover.**

Removes stubborn grease and deep oil staining from natural and engineered stone. Also for removal of discoloration on peripheral zones in case of silicon joints and for removal of stubborn wax.

**Product type:** solvent based cleaner

- gel allows longer working times
- very economical
- easy-to-apply gel

**Coverage:** approx. 0.5m<sup>2</sup>/tube

**Storage:** closed, cool, up to 2 years

**Packaging:** 250 ml-tube



Art.Nr. 037

### Lithofin Resin-EX

#### Special Stripper Gel.

Removes all residues of epoxy-grout and similar blemishes such as resins, sealants, oil and grease deposits, paint (graffiti), plastic residues, etc. Suitable for ceramics and all rough natural and artificial stones.

**Product type:** acid and solvent based cleaner

- gel-like, easy to use
- does not leave streaks
- highly active

**Coverage:** approx. 5m<sup>2</sup>/L

**Storage:** closed, cool, up to 2 years

**Packaging:** 1L, 5L



Art.Nr. 038

### Lithofin Rust-EX

#### Non-Acidic Rust Stain Remover.

Removes rust stains and discolouration from tiles, natural and concrete stone.

**Product type:** mildly alkaline cleaner

- can be used on single spots
- fast acting
- for interior and exterior use

**Coverage:** approx. 10m<sup>2</sup>/L

**Storage:** closed, cool, dark, up to 1 year

**Packaging:** 500ml



Art.Nr. 094

### Lithofin STAINSTOP >W<

#### Water Based Special Impregnator.

This solvent free impregnator effectively protects surfaces against the penetration of oil, grease, dirt and water and prevents staining. Facilitates care on all absorbent stain sensitive surfaces.

**Product type:** water based protective impregnator

- invisible, matte
- effective for many years
- odourless

**Coverage:** approx. 10 to 20m<sup>2</sup>/L

**Storage:** closed, cool, up to 2 years

**Packaging:** 1L, 5L



Art.Nr. 188

### Lithofin Stainstop PLUS

#### Impregnator plus Colour Intensifier.

Makes absorbent stone surfaces more vivid in colour and at the same time makes the surface water and oil repellent thereby largely preventing staining.

**Product type:** solvent based protective impregnator

- no gloss
- long-term effect
- breathable

**Coverage:** approx. 6 to 15m<sup>2</sup>/L

**Storage:** closed, cool, dry, up to 2 years

**Packaging:** 1L, 5L



Art.Nr. 032

### Lithofin ALGEX\*

#### Special Cleaner for Outdoor Areas.

Removes common dirt and slippery green deposits from terraces, steps, paths, walls, etc. Quarry tiles, stone, concrete, plaster and wood are thoroughly cleaned and brightened up.

**Product type:** mildly alkaline special cleaner

- concentrate - 1 L for up to 200m<sup>2</sup>
- self acting and preventive
- easy and safe to use

**Coverage:** approx. 30 to 200m<sup>2</sup>/L

**Storage:** closed, cool, up to 5 years

**Packaging:** 1L, 5L

\*Use biocides safely. Always read the label and product information before use.



Art.Nr. 199

### Lithofin Anti-Slip

#### Set for permanent Anti-Slip Treatment.

For all slippery surfaces made from ceramic tiles and natural stone. For use on balconies, terraces, stairs, etc.

- permanent
- safe
- easy to use

**Coverage:** approx. 6m<sup>2</sup>/set

**Storage:** closed, cool, dry, up to 3 years

**Packaging:** set contains basic cleaner, anti-slip fluid, gloves, sponges



Art.Nr. 095

### Lithofin MULTI-SEAL

#### Protective Film with Satin Finish.

For rough honed stone and terracotta surfaces. Produces a resistant satin finish, which strengthens the colour of the surface material. Makes stain resistant and facilitates maintenance. Ideal for refurbishing used surfaces.

**Product type:** water based protective sealant

- glossy
- low on odours
- easy to use

**Coverage:** approx. 7 to 12m<sup>2</sup>/L

**Storage:** closed, cool, frostfree, up to 3 years

**Packaging:** 1L



Art.Nr. 031

### Lithofin EASY-CARE

#### Cleans and Maintains in one Operation.

Universally usable for cleaning all water-resistant interior surfaces, such as all ceramic tiles, clinker, brick and clay slabs, terracotta all types of stone, plastics, lacquered surfaces etc. Colours will become stronger with regular use, making floors more attractive.

**Product type:** mildly alkaline maintenance product

- concentrate - very high yield
- does not form layers
- non leaching

**Coverage:** use one squirt (ca. 20 ml) per 10 L bucket of water

**Storage:** closed, cool, up to 5 years

**Packaging:** 1L, 5L



Art.Nr. 021

### Lithofin SPLASH-STOP

#### Universal Water Protection.

Repels water, protects against penetration of moisture, and reduces tendency to become dirty. For absorbent quarry tiles, brick, concrete, many natural and engineered stone claddings and their joints.

**Product type:** solvent based protective impregnator

- invisible, matte
- lasts many years
- surface remains „breathable“

**Coverage:** approx. 7 to 15 m<sup>2</sup>/L

**Storage:** closed, cool, dry, up to 3 years

**Packaging:** 1L, 5L



Art.Nr. 053

### Lithofin Splash-Stop >W<

#### Water Based Impregnator.

For absorbent, open pored clinker, unglazed tiles, natural and concrete stone. Prevents the penetration of water and helps keep surfaces looking clean.

**Product type:** water based protective impregnator

- does not change the appearance
- tolerant to residual moisture
- the surface remains „breathable“

**Coverage:** approx. 10 to 25 m<sup>2</sup>/L

**Storage:** closed, cool, up to 2 years

**Packaging:** 1 L, 5 L



## For ceramic and porcelain tiles.



**KF-Line.**  
Products specifically for ceramic and porcelain tiles and sanitary areas.



Art.Nr. 110

### Lithofin KF Cement Residue Remover

For interior and exterior use on ceramic surfaces such as fully vitrified tiles, quarry tiles, clay pavers, etc. Effortlessly removes cement and mortar residues, rust, lime, efflorescence and other hardened dirt layers.

**Product type:** acidic cleaner

- concentrate - very high yield
- acts rapidly
- hardly any odour

**Coverage:** approx. 20 to 30 m<sup>2</sup>/L  
**Storage:** closed, cool, up to 4 years  
**Packaging:** 1L, 5L



Art.Nr. 180

### Lithofin KF Intensive Cleaner

For occasional thorough cleaning or for regular cleaning of floors subjected to heavy wear. Removes stubborn dirt, oil and grease. Suitable for all ceramic finishes.

**Product type:** alkaline cleaner

- concentrate - high yield
- extra strong
- highly active

**Coverage:** 10 to 15m<sup>2</sup>/L as base cleaner, up to 100m<sup>2</sup> diluted  
**Storage:** closed, cool, up to 5 years  
**Packaging:** 1L, 5L



Art.Nr. 184

### Lithofin KF Tile Restorer

For thorough cleaning of used ceramic surfaces in case of particularly greasy general dirt; for removing encrusted floor care products and self-gloss films without leaving any traces.

**Product type:** alkaline cleaner

- concentrate
- solvent free
- easy to use

**Coverage:** approx. 10 to 30 m<sup>2</sup>/L  
**Storage:** closed, cool, up to 5 years  
**Packaging:** 1L, 5L



Art.Nr. 183

### Lithofin KF Protective Impregnator

For initial treatment of new floors with polished and sensitive surfaces. Prevents penetration of water and oil, protects against stains and dirt, and makes maintenance easier.

**Product type:** water based protective impregnator

- ideal for polished porcelain tiles
- ready for use
- odourless

**Coverage:** up to 50m<sup>2</sup>/L  
**Storage:** closed, cool, frostfree, up to 3 years  
**Packaging:** 1L, 5L



Art.Nr. 118

### Lithofin KF Stain-Stop

This special impregnator protects absorbent, stain sensitive ceramic finishes and grout against stains. Prevents penetration of oil, grease and water to a high degree, making maintenance easier. Poses no health hazard once the product has dried.

**Product type:** solvent based protective impregnator

- ready for use
- no gloss
- long-term protection

**Coverage:** approx. 7 to 15m<sup>2</sup>/L  
**Storage:** closed, cool, dry, up to 3 years  
**Packaging:** 1L, 5L



Art.Nr. 182

### Lithofin KF Conditioning Cleaner

For continuous care of floors subjected to normal levels of wear. Cleans and maintains rough and polished surfaces streak-free making them even more attractive.

**Product type:** mildly alkaline maintenance product

- concentrate - very high yield
- also for polished surfaces
- does not form layers

**Coverage:** Use one squirt (ca. 20ml) per 10 L bucket of water  
**Storage:** closed, cool, up to 5 years  
**Packaging:** 1L, 5L



Art.Nr. 113

### Lithofin KF Silicone Remover

Dissolves silicone and supports cleaning in case of silicone stains. Ideal for removing old silicone joints. Suitable for all solvent and acid resistant ceramics, porcelain, glass and similar surfaces.

**Product type:** acid and solvent based cleaner

- fast acting
- consistency allows for longer working times
- does not leave any residues

**Storage:** closed, cool, up to 2 years  
**Packaging:** 500ml



Art.Nr. 111

### Lithofin KF Ceramic-Clean

For the regular maintenance of bathrooms and toilet areas, promoting shine and hygienic cleanliness. Removes lime scale, rust, grease deposits and soap scum from baths and showers. Cleans chrome, ceramics, stainless steel etc. Not for acid-sensitive surfaces.

**Product type:** acidic cleaner

- concentrate - very high yield
- self-acting
- pleasant odour

**Coverage:** up to 100m<sup>2</sup>/L  
**Storage:** closed, cool, up to 5 years  
**Packaging:** 1L



Art.Nr. 309

### Lithofin KF Showercabin and Bath Cleaner

For easy and quick cleaning of shower cabins made of glass or synthetics, shower curtains, tiles and fixtures. Leaves surfaces hygienically clean.

**Product type:** acidic cleaner

- dissolves calcium and dirt deposits
- ready-to-use: spray, allow to work, rinse, done

**Coverage:** up to 50m<sup>2</sup>/L  
**Storage:** closed, cool, up to 4 years  
**Packaging:** 500ml



Art.Nr. 114

### Lithofin KF Mildew-Away\*

Removes black spots, mould, fungus, algae and other organic discolorations in sanitary areas. Effective on tiles, silicon and cement joints, on plaster, stone and masonry.

**Product type:** chlorine based cleaner

- ready-to-use
- easy to use
- acts rapidly

**Coverage:** approx. 6m<sup>2</sup>/L  
**Storage:** closed, cool, dark, up to 1 year  
**Verpackung:** 500ml

\*Use biocides safely. Always read the label and product information before use.



Art.Nr. 115

**Lithofin KF Grout Cleaner**

Restores joints of tile surfaces, walls and floors to their original colour. Removes grease, oil and dirt deposits from joints in kitchens and bathrooms, makes them hygienically clean and fresh.

**Product type:** alkaline cleaner

- high yield
- acts intensively
- acts rapidly

**Coverage:** up to 6m<sup>2</sup>/L  
**Storage:** closed, cool, up to 3 years  
**Packaging:** 500ml



Art.Nr. 116

**Lithofin KF Grout Protector**

For grout in ceramic surfaces. Protects against greasy dirt and spots in kitchen and bathroom, and makes maintenance easier.

**Product type:** water based protective impregnator

- ready for use
- invisible
- long-term effect

**Coverage:** up to 5m<sup>2</sup>/500ml  
**Storage:** closed, cool, frostfree, up to 2 years  
**Packaging:** 500ml

**For cotto and terracotta.**



TC-Line.  
 Products specifically for cotto and terracotta.

**Please Note:**  
 for removing cement residues and efflorescence we recommend Lithofin KF Cement Residue Remover (interiour use) or Lithofin CEMENT-AWAY (exteriour use).



Art.Nr. 140

**Lithofin TC Impregnator**

First step of the MODERN method: Pre-impregnation for increased protection against oil and grease. Applied immediately before final treatment with Lithofin TC Sealant.

**Product type:** water based protective impregnator

- easy to apply
- ready-to-use
- fast drying

**Coverage:** up to 10m<sup>2</sup>/L  
**Storage:** closed, cool, frostfree, up to 2 years  
**Packaging:** 1L



Art.Nr. 139

**Lithofin TC Sealant**

Second step of the MODERN method: For treatment of surfaces which have been pre-treated with Lithofin TC Impregnator. Can also be used for treatment of materials which have already been impregnated by the manufacturer. Produces a naturally bright, neutral appearance.

**Product type:** water based protective sealant

- easy to apply
- self-glossing
- water-based

**Coverage:** up to 20m<sup>2</sup>/L  
**Storage:** closed, cool, frostfree, up to 3 years  
**Packaging:** 1L



Art.Nr. 143

**Lithofin TC Classic Primer**

First step of the CLASSIC method: works as a base before the final treatment. Determines the later colour shade of the finish and makes even application of Lithofin TC Classic Wax easier.

**Colours:** antique  
**Product type:** solvent based primer

- ready-to-use
- strong in colour
- dries quickly

**Coverage:** up to 10m<sup>2</sup>/L  
**Storage:** closed, cool, dry, up to 2 years  
**Packaging:** 1L, 5L



Art.Nr. 144

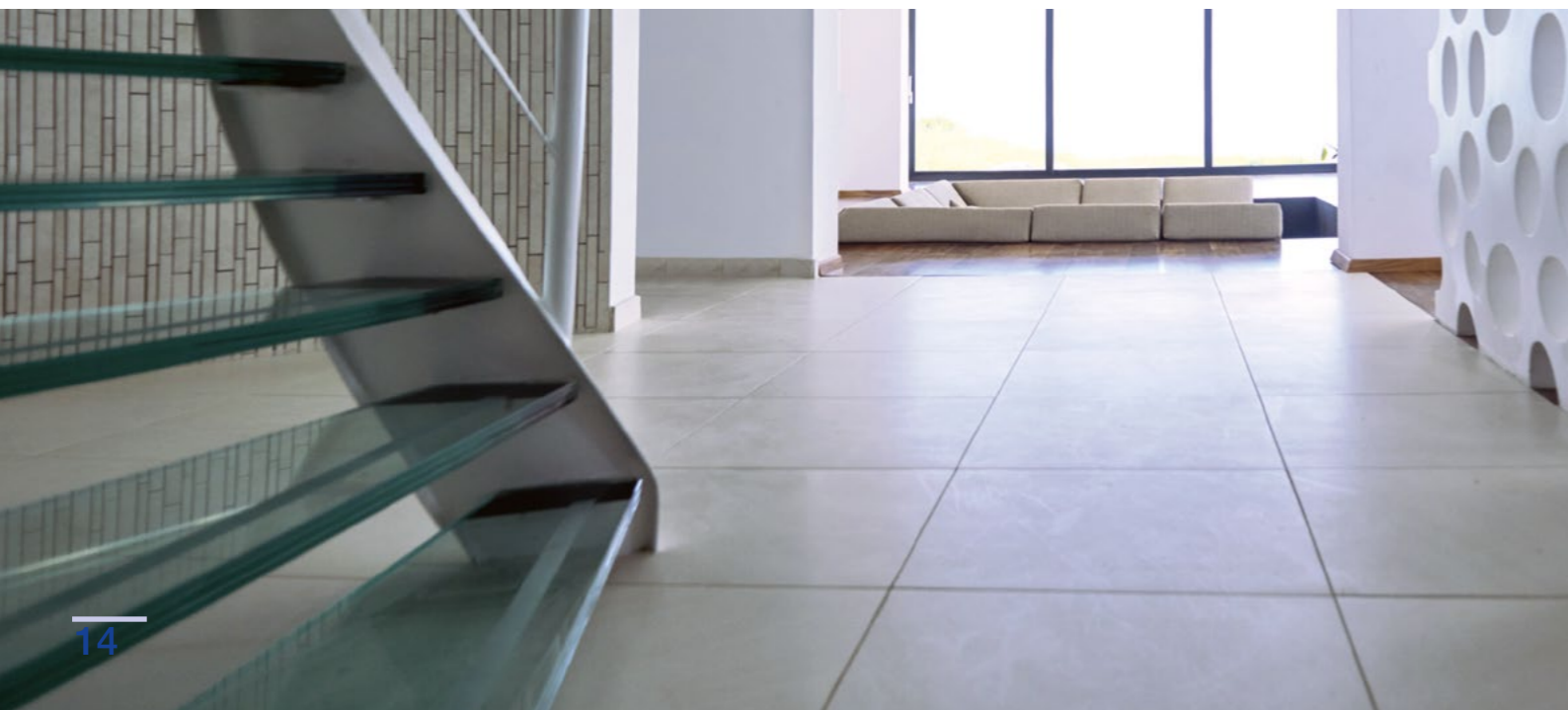
**Lithofin TC Classic Wax**

Second step of the CLASSIC method: For final treatment of primed surfaces. Forms an easy to polish, wear-resistant wax layer, which helps the patina to develop. Can be used for future touch-up work.

**Colours:** neutral, antique  
**Product type:** solvent based protective wax

- ready-to-use
- easy to apply
- dries quickly

**Coverage:** up to 10m<sup>2</sup>/L  
**Storage:** closed, cool, dry, up to 3 years  
**Packaging:** 1L, 5L







Art.Nr. 137

**Lithofin TC Ever-Sheen**

For occasional freshening up of gloss and wax protection. For surfaces treated with the CLASSIC method, encourages patina formation. Can be applied dissolved in washing water or undiluted.

**Product type:** water based protective and maintenance product

- concentrate - high yield
- contains wax
- polishable

**Coverage:** approx. 20m<sup>2</sup>/L, up to 200m<sup>2</sup> if applied diluted  
**Storage:** closed, cool, frostfree, up to 3 years  
**Packaging:** 1L, 5L

Please Note: for regular maintenance cleaning we recommend Lithofin EASY-CARE.



**For natural and concrete stone and quartz composite.**



MN-Line.  
 Products specifically for natural stone, concrete, artificial stone and quartz composite.



Art.Nr. 160

**Lithofin MN Power-Clean**

For thorough cleaning in case of severe general and greasy dirt, residues of floor care products, etc. For regular cleaning of high-traffic and outdoor areas such as shopping centres and food courts. For final cleaning of new surfaces at building sites.

**Product type:** alkaline cleaner

- concentrate - high yield
- highly effective
- low on solvents and odour

**Coverage:** approx. 10 to 30m<sup>2</sup>/L  
**Storage:** closed, cool, up to 3 years  
**Packaging:** 1L, 5L



Art.Nr. 162

**Lithofin MN Builders' Clean**

Cleans granite, gneiss, quartzite and other natural and engineered stones. Removes cement films, stubborn dirt residues, blooms, efflorescence, rust and rust discolorations. Also acts to prevent rust in hard stones containing iron. Not suitable for polished marble, limestone etc.

**Product type:** acidic cleaner

- concentrate - high yield
- very strong
- prevents rust

**Coverage:** approx. 30 to 50m<sup>2</sup>/L  
**Storage:** closed, cool, up to 5 years  
**Packaging:** 1L, 5L



Art.Nr. 163

**Lithofin MN Outdoor Cleaner\***

Removes stubborn green and dark deposits as well as stains caused by trees or flowers from all natural and artificial stone surfaces. Flagstones, pavier, walls, paths, etc. are immediately restored to their original colour.

**Product type:** chlorine based cleaner

- highly effective
- fast acting
- acid free

**Coverage:** up to 15m<sup>2</sup>/L  
**Storage:** closed, cool, dark, up to 1 year  
**Packaging:** 1L, 5L

\* Use biocides safely. Always read the label and product information before use.



Art.Nr. 166

**Lithofin MN Stain-Stop**

This special impregnator optimally protects absorbent, stain-sensitive natural and engineered stone surfaces against staining. Largely prevents penetration of oil, grease and water and makes further maintenance easier.

**Product type:** solvent based protective impregnator

- poses no health concerns once dry
- ready to use
- effective for many years

**Coverage:** approx. 7 to 15m<sup>2</sup>/L  
**Storage:** closed, cool, dry, up to 3 years  
**Packaging:** 500ml, 1L, 5L



Art.Nr. 198

**Lithofin MN Stain-Stop >ECO<**

This ready-to-use special impregnator is water based and nearly odourless. It has been developed specifically for absorbent limestone. The easy to apply treatment ensures the ultimate protection against water and oil stains and facilitates every-day maintenance.

**Product type:** water based protective impregnator

- low on odour
- for indoor and outdoor use
- does not change the appearance

**Coverage:** approx. 4 to 8m<sup>2</sup>/L  
**Storage:** closed, cool, frostfree, up to 3 years  
**Packaging:** 1 L, 5 L



Art.Nr. 167

**Lithofin MN Colour Intensifier**

Improves the appearance of rough, absorbent natural and concrete stone surfaces. Enhances the colour, accentuates the structure, and makes water and dirt repellent.

**Product type:** solvent based protective impregnator

- no gloss
- can be applied several times
- ideal for concrete slabs and pavers

**Coverage:** approx. 7 to 15m<sup>2</sup>/L  
**Storage:** closed, cool, dry, up to 4 years  
**Packaging:** 1L, 5L



Art.Nr. 171

**Lithofin MN Polish (Cream)**

For enhancing and polishing stone surfaces, provides gloss and protection. Takes care of all polished surfaces, and maintains their beautiful appearance.

**Product type:** waterbased protective wax

- easy to polish
- high yield
- ready-to-use

**Coverage:** approx. 40m<sup>2</sup>/L  
**Storage:** closed, cool, dry, up to 2 years  
**Packaging:** 125ml, 500ml



Art.Nr. 177

**Lithofin MN Slate Oil**

For protecting and maintaining all coloured and clay slates. Enhances natural colour and accentuates the structure, improving the appearance of the material. Ideal for restoring old surfaces.

**Product type:** wax containing maintenance product

- easy to apply
- high yield
- can be buffed

**Coverage:** approx. 20m<sup>2</sup>/L  
**Storage:** closed, cool, dry, up to 3 years  
**Packaging:** 1L



Art.Nr. 168

**Lithofin MN Slate-Seal**

For rough and honed surfaces. Forms a shiny protective layer, strengthens the colour structure and simplifies maintenance.

**Product type:** solvent based protective sealant

- ready to use
- recommended for indoor use
- can be applied in several coats

**Coverage:** approx. 10 to 20m<sup>2</sup>/L  
**Storage:** closed, cool, dry, up to 5 years  
**Packaging:** 1L, 5L



Art.Nr. 170

**Lithofin MN Care-Seal**

Shiny protective film, which strengthens colour and gloss. For initial treatment of honed or rustic surfaces, and for occasional care of worn surfaces which have become dull.

**Product type:** water based protective sealant

- concentrate - high yield
- for interior use only
- easy to use

**Coverage:** approx. 20m<sup>2</sup>/L undiluted, up to 200m<sup>2</sup> diluted  
**Storage:** closed, cool, frostfree, up to 3 years  
**Packaging:** 1L, 5L



Art.Nr. 172

**Lithofin MN Care-Sheen**

For occasional restoration of sheen on polished marble and other stone floors. Forms a fine surface film and is the ideal additional care-product for all shiny floors. Also highly suitable to add sheen to unpolished, honed and matt finishes.

**Product type:** water based protective and maintenance product

- concentrate - high yield
- for indoor use only
- contains wax

**Coverage:** approx. 20m<sup>2</sup>/L undiluted, up to 200m<sup>2</sup> diluted  
**Storage:** closed, cool, frostfree, up to 3 years  
**Packaging:** 1L, 5L



Art.Nr. 373

**Lithofin MN Wash & Clean**

Developed for continuous care of all types of stone surfaces. Cleans, enhances, and maintains the surface in one action. Coarse and polished surfaces become increasingly beautiful and richer in colour and structure with regular use. Ideal for impregnated or sealed surfaces.

**Product type:** mildly alkaline maintenance product

- concentrate - very high yield
- does not form layers
- non-bleaching

Use one squirt (ca. 20 ml) per 10 L bucket of water.  
**Storage:** closed, cool, up to 5 years  
**Packaging:** 1 L, 5 L



Art.Nr. 178

**Lithofin MN Cobble Wax**

For finishing treatment of antique marble floors with sandblasted or similarly processed surfaces. Also suitable for further care of waxed antique marble surfaces. Creates a hardwearing film and a richly coloured, shiny appearance. Makes the surface less sensitive and easier to maintain.

**Product type:** solvent based protective wax

- ready-to-use
- easy to polish
- for indoor use only

**Coverage:** approx. 20m<sup>2</sup>/L  
**Storage:** closed, cool, dry, up to 3 years  
**Packaging:** 1L, 5L



Art.Nr. 169

**Lithofin MN Polish**

For occasional freshening up and polishing of stone surfaces, provides gloss and protection. Maintains the beautiful appearance of all polished surfaces.

**Product type:** solvent based protective wax

- easy to polish
- for indoor use only
- ready-to-use

**Coverage:** approx. 10-20m<sup>2</sup>/L  
**Storage:** closed, cool, dry, up to 3 years  
**Packaging:** 1L, 10L



Art.Nr. 189

**Lithofin MN Easy-Clean**

For every-day cleaning of small stone surfaces such as kitchen bench-tops, tabletops, bathroom vanity tops and wall tiles. Enhances the appearance of the stone and leaves a pleasant odour.

**Product type:** mildly alkaline cleaner

- cleans, protects and maintains
- does not leave streaks
- no health concerns once dry

**Packaging:** 500ml

## For parquet and laminate.



P&L-Line.  
Products specifically for parquet,  
laminate, cork and vinyl.



Art.Nr. 301

### Lithofin P&L Power-Clean

Removes stubborn dirt deposits, greasy spills and encrusted care product residues. Highly suitable for initial cleaning of newly installed floors.

**Product type:** mildly alkaline cleaner

- concentrate - high yield
- very mild

**Coverage:** approx. 10 to 30m<sup>2</sup>/L  
**Storage:** closed, cool, up to 3 years  
**Packaging:** 1L



Art.Nr. 302

### Lithofin P&L Shine Protector

Protects sealed parquet, laminate, cork and synthetic floors against scratching, wear and staining. Leaves a natural sheen and facilitates maintenance. Ideally suited for touching up worn surfaces.

**Product type:** water based protective sealant

- ready-to-use
- easy to apply

**Coverage:** up to 50m<sup>2</sup>/L  
**Storage:** closed, cool, frostfree, up to 2 years  
**Packaging:** 1L



Art.Nr. 304

### Lithofin P&L Care Cleaner

For regular use as a maintenance cleaner. Leaves care components on the surface that support the natural sheen and make the next cleaning operation easier.

**Product type:** mildly alkaline maintenance product

- concentrate - very high yield
- does not form layers

**Coverage:** Use one squirt (ca. 20 ml) per 10 L bucket of water  
**Storage:** closed, cool, up to 3 years  
**Packaging:** 1L



## Additional products for end consumers.



### HOME-Line.

Products for use around the house, garage, garden, etc.



Art.Nr. 307

#### Lithofin Limescale-Away

Dissolves calcium deposits on shower heads, fixtures, kettles and coffee makers, etc.

**Product type:** acidic cleaner

- concentrate
- highly active
- odourless

**Storage:** closed, cool, up to 4 years  
**Packaging:** 500ml



Art.Nr. 305

#### Lithofin Plastic Cleaner

Cleans quickly, efficiently and effectively. Removes oily and greasy deposits in kitchen and bath. Ideally suited for window and door frames, shutter, garden furniture, etc.

**Product type:** alkaline cleaner

- ready-to-use
- easy to use
- mild

**Coverage:** up to approx. 15m<sup>2</sup>/L  
**Storage:** closed, cool, up to 4 years  
**Packaging:** 500ml



Art.Nr. 308

#### Lithofin Sticker Remover

Removes all types of stickers and labels and dissolves adhesive residues on many surfaces such as stone, tiles and glass. Also removes rubber, tar, etc.

**Product type:** solvent based cleaner

- acts rapidly yet gentle
- ready-to-use
- very high yield

**Storage:** closed, cool, dry, up to 3 years  
**Packaging:** 250ml



Art.Nr. 310

#### Lithofin Stove & Oven Glass Cleaner

Cleans glass surfaces in stoves and ovens, microwaves, and similar fire proof surfaces. Quickly and effortlessly removes soot and burnt-in residues.

**Product type:** alkaline cleaner

- ready-to-use
- easy to use
- spray, wipe, done

**Coverage:** up to 15m<sup>2</sup>/L  
**Storage:** closed, cool, up to 4 years  
**Packaging:** 500ml



Art.Nr. 333

#### Lithofin Graffiti Remover

**Removes all Types of Graffiti.**

Dissolves spray paint, oil and grease, soot, etc. Suitable for use on natural stone, quarry tiles, concrete, plaster, glass, etc.

**Product type:** alkaline cleaner

- ready-to-use
- universally useable

**Coverage:** approx. 15m<sup>2</sup>/L  
**Storage:** closed, cool, up to 3 years  
**Packaging:** 500ml



Art.Nr. 317

#### Lithofin Steel-Clean

Cleans, protects and maintains all stainless steel surfaces. Removes fingerprints, oily and greasy dirt deposits and leaves brilliant sheen.

**Product type:** oil based maintenance product

- dirt repellent
- long term effect
- indoor and outdoor use

**Coverage:** up to 50m<sup>2</sup>/can  
**Storage:** cool, dry, up to 3 years  
**Packaging:** 200ml



## For use by professionals.



### PRO-Line.

Special products for use in professional work shops or on construction sites.



Art.Nr. 017

#### Lithofin BERO

##### Rust Remover and Stone Cleaner.

For permanent removal of rust and rust discoloration, especially for ferrous hard stones, and for removal of cement film, grinding dust etc.

**Product type:** acidic cleaner

- concentrate
- contains acid

**Coverage:** up to 50m<sup>2</sup>/L

**Storage:** closed, cool, up to 5 years

**Packaging:** 1L



Art.Nr. 041

#### Lithofin ASR

##### Alkaline Special Remover.

For removing stubborn dirt deposits, grease, oil, wax, polymer layers, etc. Cleans and degreases ceramic tiles, stone, slabs, etc.

**Product type:** highly alkaline cleaner

- concentrate
- highly effective

**Coverage:** up to 100m<sup>2</sup>/L

**Storage:** closed, cool, up to 5 years

**Packaging:** 1L, 5L



Art.Nr. 085

#### Lithofin Abra-CLEAN

##### Alkaline Cleaner with abrasive Nano-Particles.

Removes stubborn dirt deposits, grease, oil and wax films. Suitable for ceramic and porcelain tiles, slabs, quarry tiles and hard natural stones.

**Product type:** mildly alkaline cleaner

- strong effect, gentle due to micro-particles
- no fumes

**Coverage:** 5-20m<sup>2</sup>/L

**Storage:** closed, cool, up to 2 years

**Packaging:** 500ml, 5L



Art.Nr. 342

#### Lithofin LEV

##### Solvent based Stripper for Sealants.

Fast drying - no need to rinse with water. For all natural and concrete stone surfaces.

**Product type:** solvent based cleaner

- also removes bitumen, grease, oil, etc.
- HINT: on large surfaces we recommend Lithofin WAX-OFF

**Coverage:** approx. 3 to 5 m<sup>2</sup>/L

**Storage:** closed, cool, dry, up to 2 years

**Packaging:** 1L



Art.Nr. 025

#### Lithofin NanoTOP

##### High performance Impregnator.

Excellent water and oil repellence on all absorbent natural and concrete stones. Optimal protection for kitchen work tops, tables, vanity tops and similar surfaces.

**Product type:** solvent based protective impregnator

- easy and fast to apply
- does not form layers, resistant to scratching

**Coverage:** 10 to 20 m<sup>2</sup>/L

**Storage:** closed, cool, dry, up to 2 years

**Packaging:** 1 L, 5 L



Art.Nr. 045

#### Lithofin FVE

##### Colour Enhancer extra.

Fast drying impregnator for dark natural stones with polished, honed, brushed and similar surface finishes. Protects kitchen work tops and other small workpieces against water and oil stains. Intensifies the colour without altering the natural structure of the stone.

**Product type:** solvent based protective impregnator

- extreme colour intensification
- fast drying

**Coverage:** approx. 20 to 40 m<sup>2</sup>/L

**Storage:** closed, cool, dry, up to 2 years

**Packaging:** 1L, 5L



Art.Nr. 186

#### Lithofin RSG

##### Slip Resistant Treatment.

For making granite and other similar hard stone less slippery. A chemical reaction causes the surface to become rougher, which provides greater resistance to slipping. The surface gloss may be diminished and maintenance may become slightly more difficult.

- permanent effect
- based on fluorosilic acid

**Coverage:** up to 20m<sup>2</sup>/L

**Storage:** closed, cool, up to 5 years

**Packaging:** 5L



Art.Nr. 174

#### Lithofin MPP

##### Marble polishing powder.

For restoring dull areas and renewing the natural polish of calcium-containing natural stone i.e. marble, limestone, etc. Can be machine-polished to high gloss. Not suitable for granite, gneiss and similar hard stones.

- no fumes
- based on oxalic acid

**Coverage:** up to 40 m<sup>2</sup>/kg

**Storage:** closed, cool, dry, up to 4 years

**Packaging:** 0.75 kg

# Lithofin Care Kits.

Surprise you customer. Installing or refurbishing kitchens or bathrooms presents a high investment for most people. They will want to enjoy their new stone or tile surfaces for as long as possible. Present your customers with a Lithofin Care Kit and help them to maintain their surfaces properly.

## Lithofin Care Kits in a Case.



Art.Nr. 227-75

### For all natural stone kitchen work tops

**contains:**

- 500 ml Lithofin MN Power-Clean
- 250 ml Lithofin STAINSTOP >W<
- 500 ml Lithofin MN Easy-Clean



Art.Nr. 224-75

### For polished natural stone kitchen work tops

**contains:**

- 500 ml Lithofin MN Stain-Stop
- 150 ml Lithofin MN Polish
- 500 ml Lithofin MN Easy-Clean



Art.Nr. 225-75

**contains:**

- 500 ml Lithofin MN Power-Clean
- 250 ml Lithofin MN Stain-Stop
- 500 ml Lithofin MN Easy-Clean

## Lithofin Care Kits in a Folding Box.



Art.Nr. 243-11

### For all natural stone kitchen work tops

**contains:**

- 250 ml Lithofin MN Power-Clean
- 500 ml Lithofin MN Easy-Clean



Art.Nr. 248-11

### For natural stone fireplaces

**contains:**

- 250 ml Lithofin MN Power-Clean
- 500 ml Lithofin MN Easy-Clean



Art.Nr. 238-11

### For quartz composite kitchen work tops

**contains:**

- 250 ml Lithofin MN Power-Clean
- 500 ml Lithofin MN Easy-Clean



Art.Nr. 249-11

**contains:**

- 125 ml Lithofin MN Polish
- 500 ml Lithofin MN Easy-Clean

The information listed in this brochure is intended as an informal and non-binding overview. The use of the products must always be adapted to local conditions and the type of material to be treated. Always test the products in an inconspicuous area or on a leftover piece before use.

# Overview.

## Products for ceramics and natural stone

Page 9

- Lithofin CEMENT-AWAY
- Lithofin WEXA
- Lithofin WAX-OFF
- Lithofin OIL-EX

Page 10

- Lithofin Resin-EX
- Lithofin Rust-EX
- Lithofin ALGEX
- Lithofin Anti-Slip
- Lithofin SPLASH-STOP
- Lithofin Splash-Stop >W<

Page 11

- Lithofin STAINSTOP >W<
- Lithofin Stainstop PLUS
- Lithofin MULTI-SEAL
- Lithofin EASY-CARE

## Products for ceramic and porcelain tiles

Page 12

- Lithofin KF Cement Residue Remover
- Lithofin KF Intensive Cleaner
- Lithofin KF Tile Restorer
- Lithofin KF Protective Impregnator

Page 13

- Lithofin KF Stain-Stop
- Lithofin KF Conditioning Cleaner
- Lithofin KF Silicone Remover
- Lithofin KF Ceramic-Clean
- Lithofin KF Showercabin and Bath Cleaner
- Lithofin KF Mildew-Away

Page 14

- Lithofin KF Grout Cleaner
- Lithofin KF Grout Protector

## Products for cotto and terracotta

Page 15

- Lithofin TC Impregnator
- Lithofin TC Sealant
- Lithofin TC Classic Primer
- Lithofin TC Classic Wax

Page 16

- Lithofin TC Ever-Sheen

## Products for natural and artificial stone

Page 17

- Lithofin MN Power-Clean
- Lithofin MN Builders' Clean
- Lithofin MN Outdoor Cleaner
- Lithofin MN Stain-Stop

Page 18

- Lithofin MN Stain-Stop >ECO<
- Lithofin MN Colour Intensifier
- Lithofin MN Slate-Seal
- Lithofin MN Care-Seal
- Lithofin MN Cobble Wax
- Lithofin MN Polish

Page 19

- Lithofin MN Polish (Cream)
- Lithofin MN Slate Oil
- Lithofin MN Care-Sheen
- Lithofin MN Wash & Clean
- Lithofin MN Easy-Clean

Page 20

## Products for parquet and laminate

Page 21

- Lithofin P&L Power-Clean
- Lithofin P&L Shine Protector
- Lithofin P&L Care Cleaner

## Products for end consumers

Page 22

- Lithofin Limescale-Away
- Lithofin Plastic Cleaner
- Lithofin Sticker Remover
- Lithofin Stove & Oven-glass Cleaner

Page 23

- Lithofin Lithofin Graffiti Remover
- Lithofin Lithofin Steel-Clean

## Products for use by professionals

Page 24

- Lithofin BERO
- Lithofin ASR
- Lithofin Abra-CLEAN
- Lithofin LEV

Page 25

- Lithofin NanoTOP
- Lithofin FVE
- Lithofin RSG
- Lithofin MPP



**Agents for Great Britain:**

CASDRON Enterprises Ltd.  
Wood End, Prospect Road  
Alresford, Hampshire SO24 9QF  
Tel. 0 19 62 73 21 26  
Fax 0 19 62 73 53 73  
E-mail: [sales@lithofin.co.uk](mailto:sales@lithofin.co.uk)  
[www.lithofin.co.uk](http://www.lithofin.co.uk)

**Manufactured in Germany by:**

LITHOFIN AG,  
D-73240 Wendlingen  
Fax: +49 (0)7024 9403-40  
e-mail: [info@lithofin.de](mailto:info@lithofin.de)

Your LITHOFIN dealer: